

Model Number: YBCI-HCQ1-R24A7

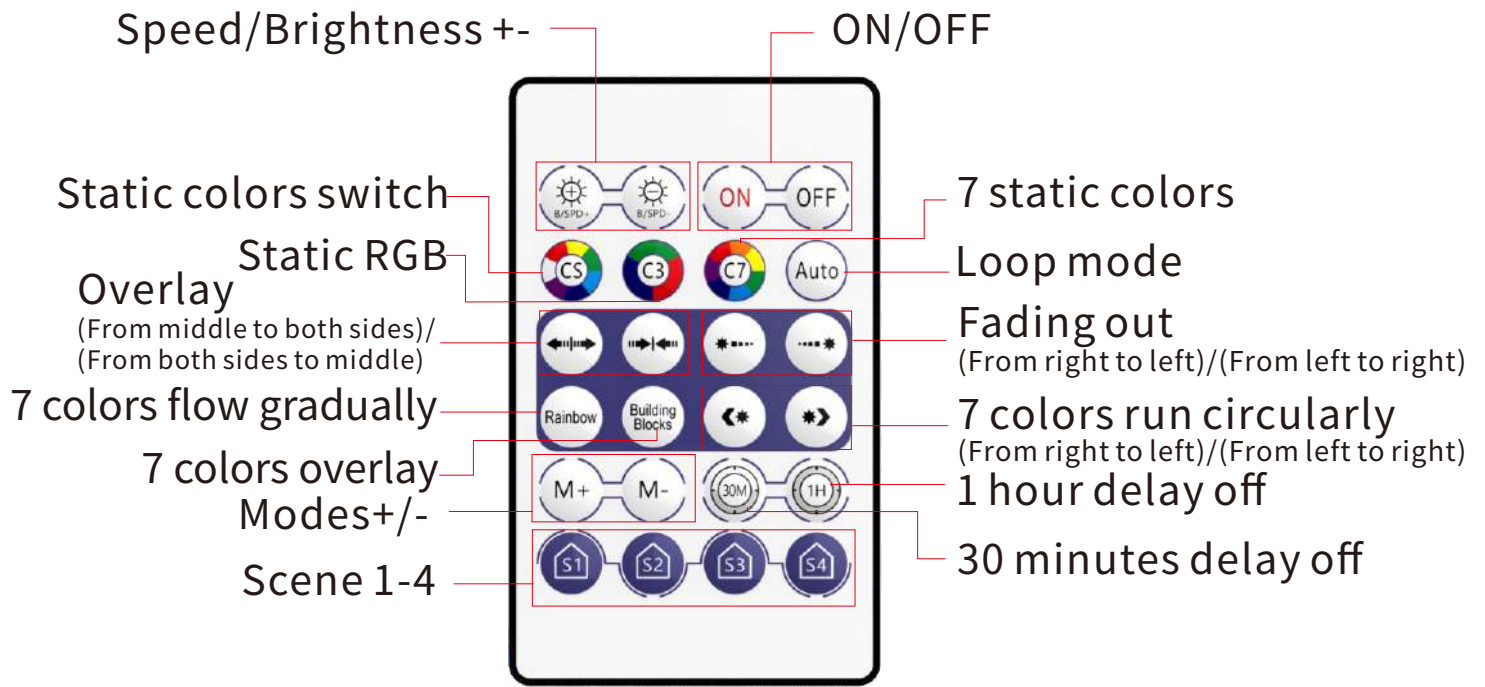
Product Name: Bluetooth SPI LED Controller (I series)







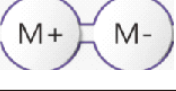

I: Product Parameter:

Category	LED Controller
Domination Principle	BLUETOOTH 5.0
APP	Magic Home Pro
Language	Chinese、English、Japanese、German
Operation Platform	Android 6.0 or IOS 11 or higher
LED Drive Type	SPI:WS2812B,SM16703,SM16704,WS2811,UCS1903 ,SK6812,SK6812RGBW,INK1003,UCS2904B
Input Voltage	DC(5-24)V
Max Output Power	144W
Work For	LED Strip
Connect Method	Common Anode
Working Temperature	-20~+55°C
Control Distance	Visible distance 40M
Certification	CE, RoHS, FCC
Warranty	1 Year

Key Functions



24keys(A7 Remote Controller)

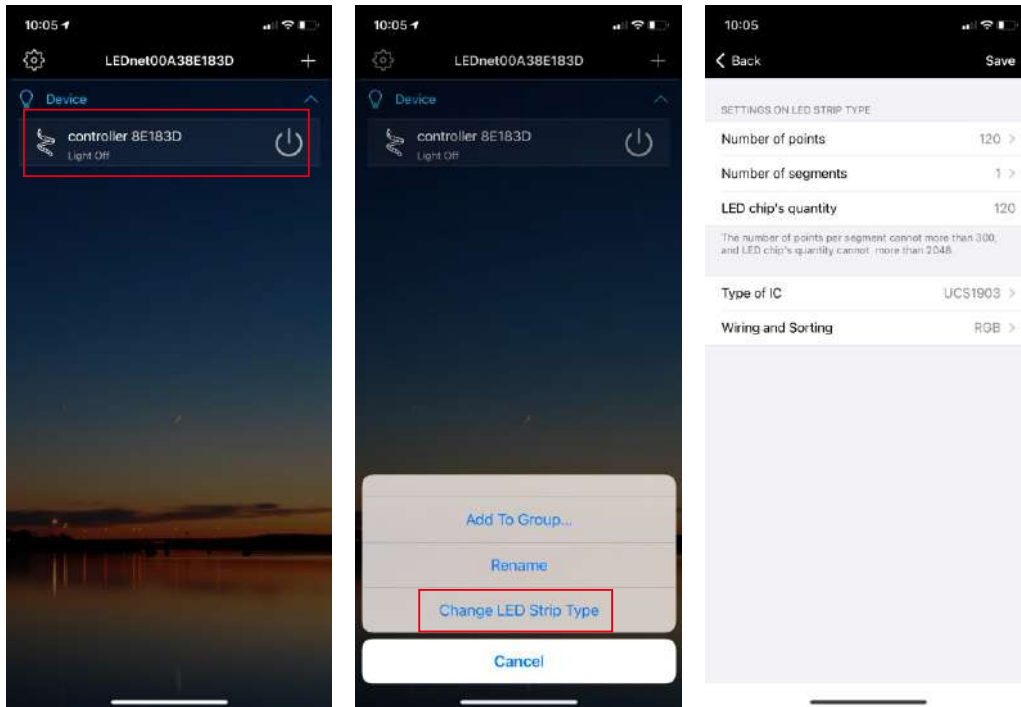
	Static colors switch	7 static colors switch (Red/yellow/green/light blue/dark blue/purple/white)
	Static RGB	3 static colors switch (Red/Green/Blue)
	7 static colors	7 static colors switch (Red/yellow/green/light blue/dark blue/purple/orange)
	Loop mode	Built-in mode switch
	Modes+/-	Built-in mode+ / Built-in mode-
	DIY Mode 1-4	Hold down for two seconds to record the current mode, and short press to trigger the recorded mode next time.

Note:

- 1) Remote control code matching: power on the device, hold down "ON" key for 5 seconds, the device flashes slowly to indicate successful code matching.
- 2) Remote code clearing: power on the device, hold down "OFF" key for 5 seconds, the device flashes quickly to indicate successful clearing
- 3) Scene mode can only record one custom color

II: How to set the IC model and IC numbers:

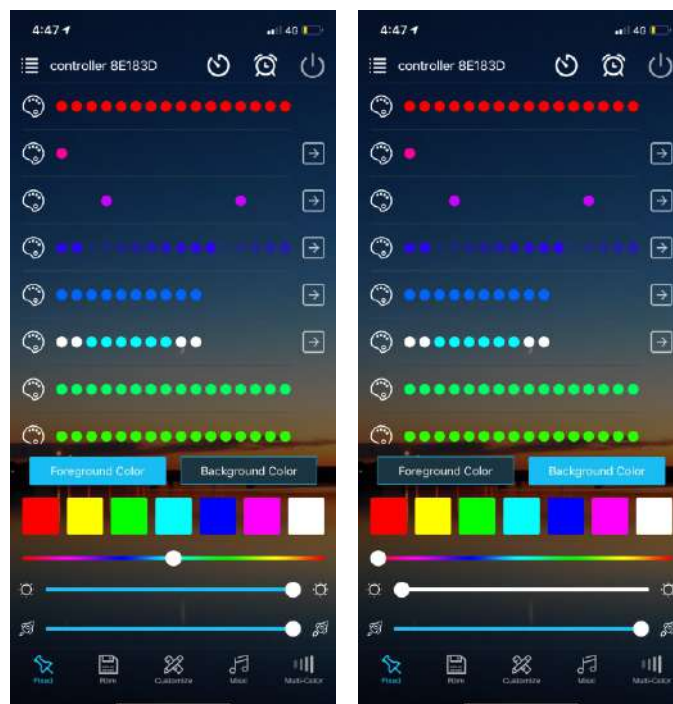
Long press the device and click on “Change LED Strip Type” to set the IC model, Wiring and Sorting, Number of points, Number of segment(Total number of points can not exceed 300 in each segment and total LED chip’ s quantity can not exceed 2048). On music mode, the total number of points in each segment and the total number of segment should be less than 150 points and 64 segments, the total LED Chip’ s quantity should be less than 960.



III: Detailed introduction of APP functions

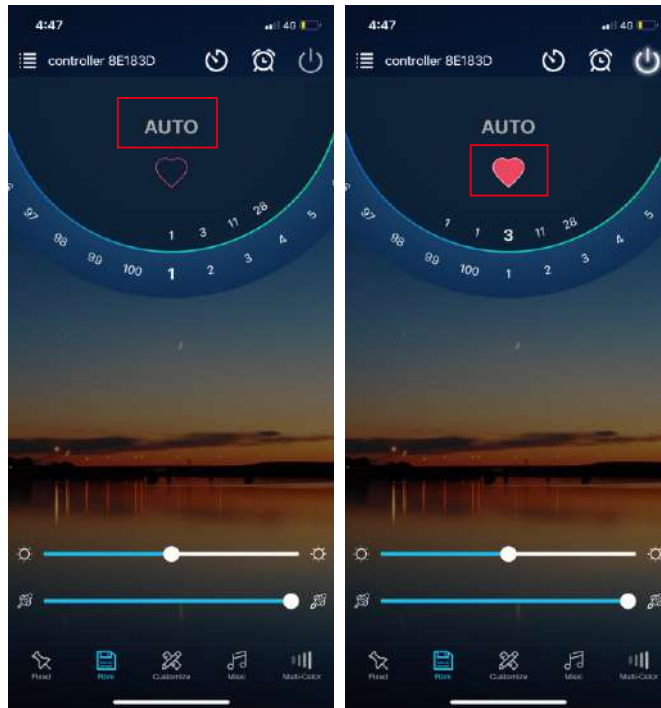
a) Fixed Mode

10 fixed modes are built in, can change foreground and background color, adjust brightness, speed and direction freely.



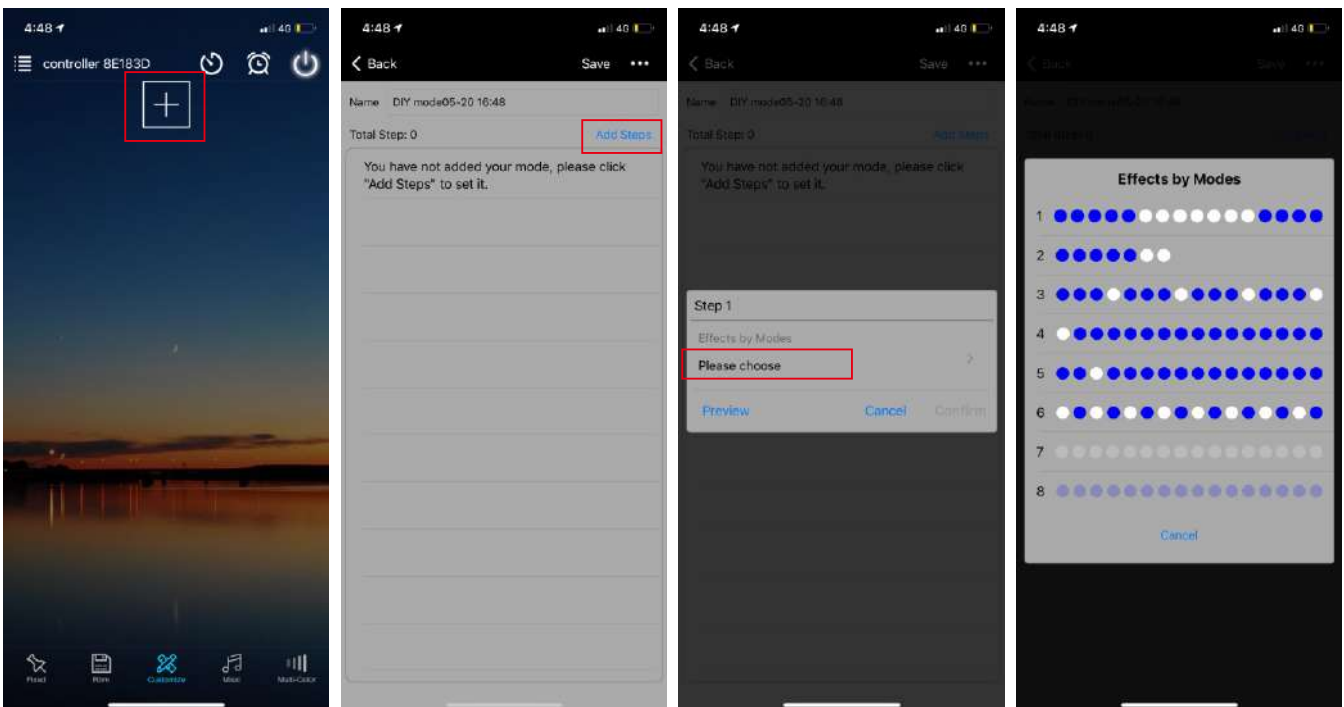
b) Rbm Mode

100 patterns of change, slide the ring to select pattern effect, and slide “☀” or “⚡” for overall pattern effect brightness or speed settings. Click on “AUTO” to enter cycle mode or click on the heart icon to mark the favorite effect.



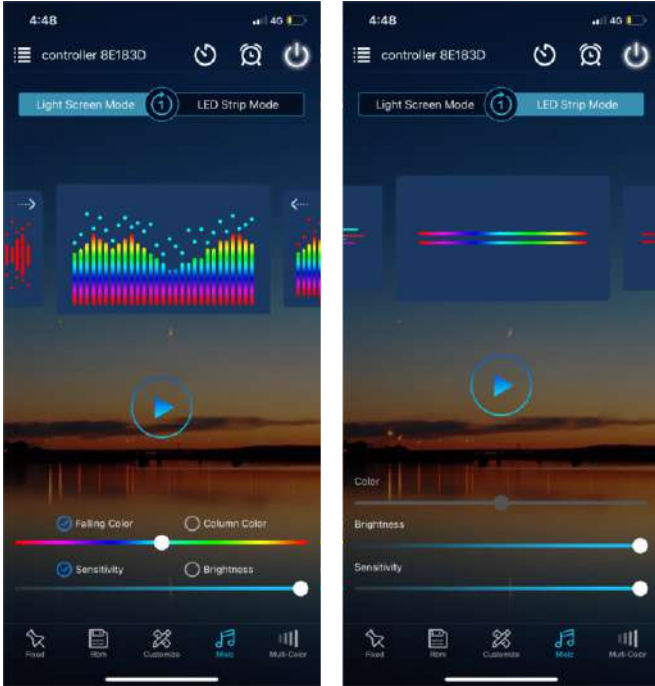
c) DIY Mode

Customized your own effects, click on “+” to choose your favorite effect and color then save it, now you can enjoy your own light effects at any time.



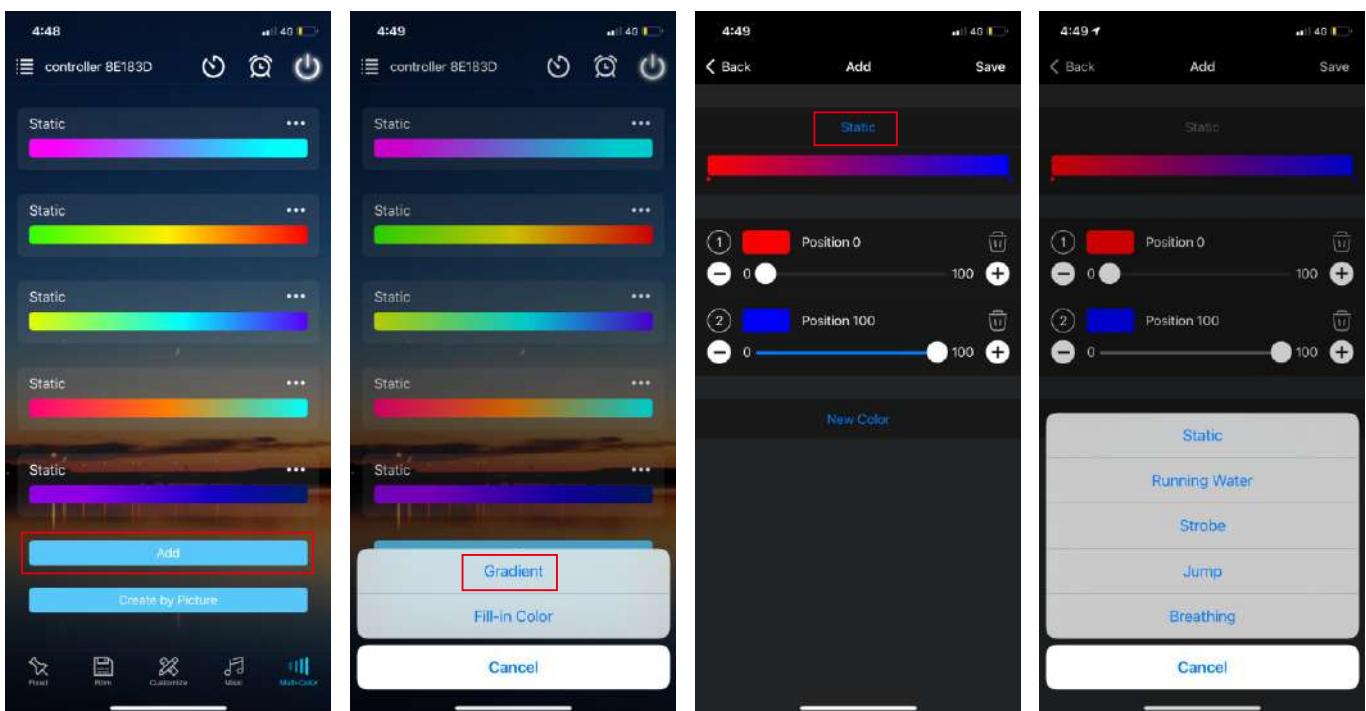
d) Music Mode

1. In the light screen mode, you can choose the falling color, column color, sensitivity and brightness, which can be played circularly to achieve a more beautiful light effect.
2. In the LED Strip Mode, you can select the brightness and sensitivity. There are two ways to input the audio signal on the controller, built in APP microphone and external microphone.

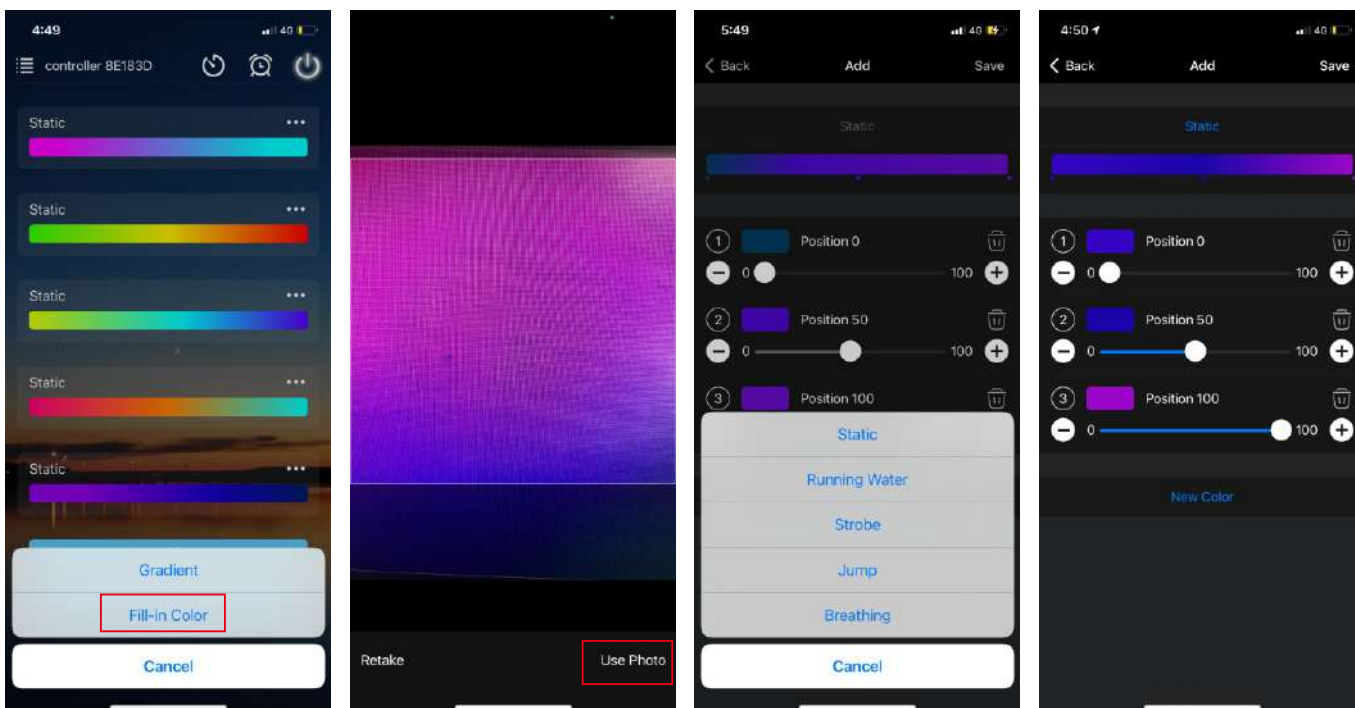


e) Multi color function

1. Can set each IC separately and set the lights with different modes
2. Optional dynamic modes for color lump gradient or mixed colors gradient: static, Asynchronous colors jumping, random color breathing, strobe and flow.

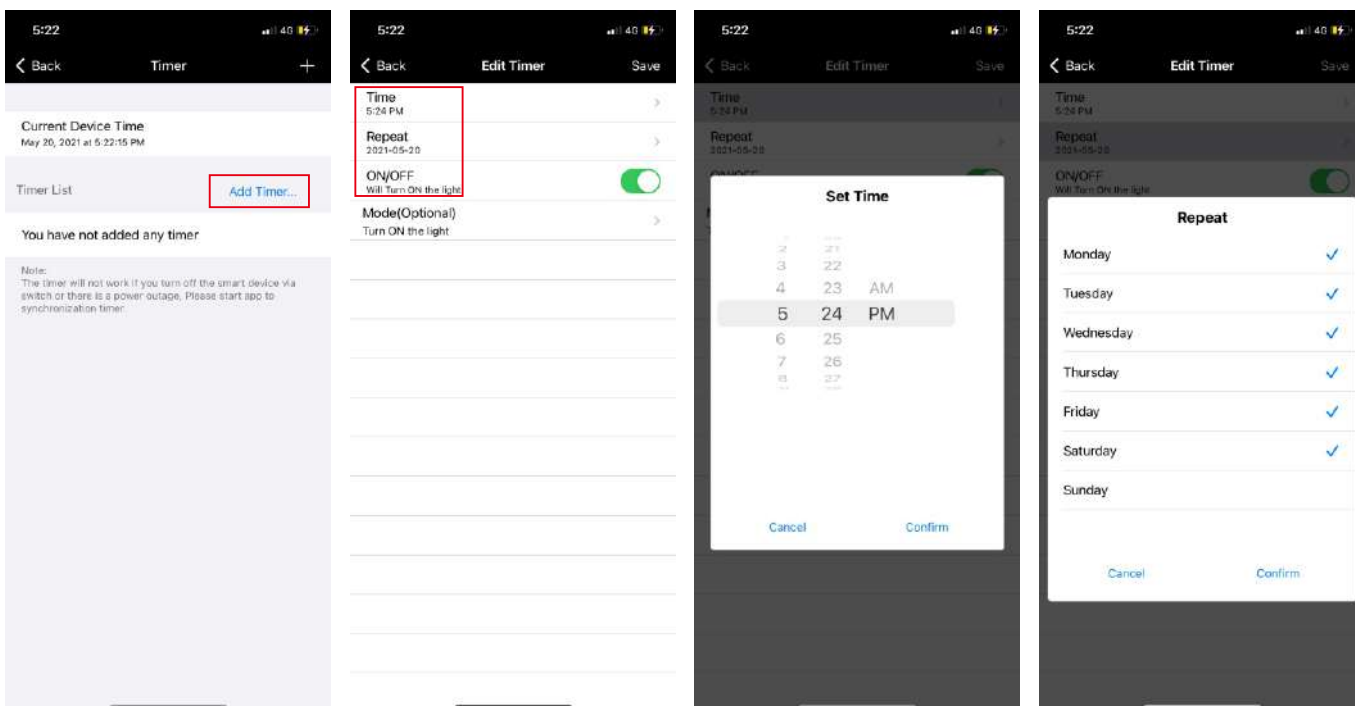


2.The area where the camera is aimed at is the coloring area, and the light color will changed accordingly.

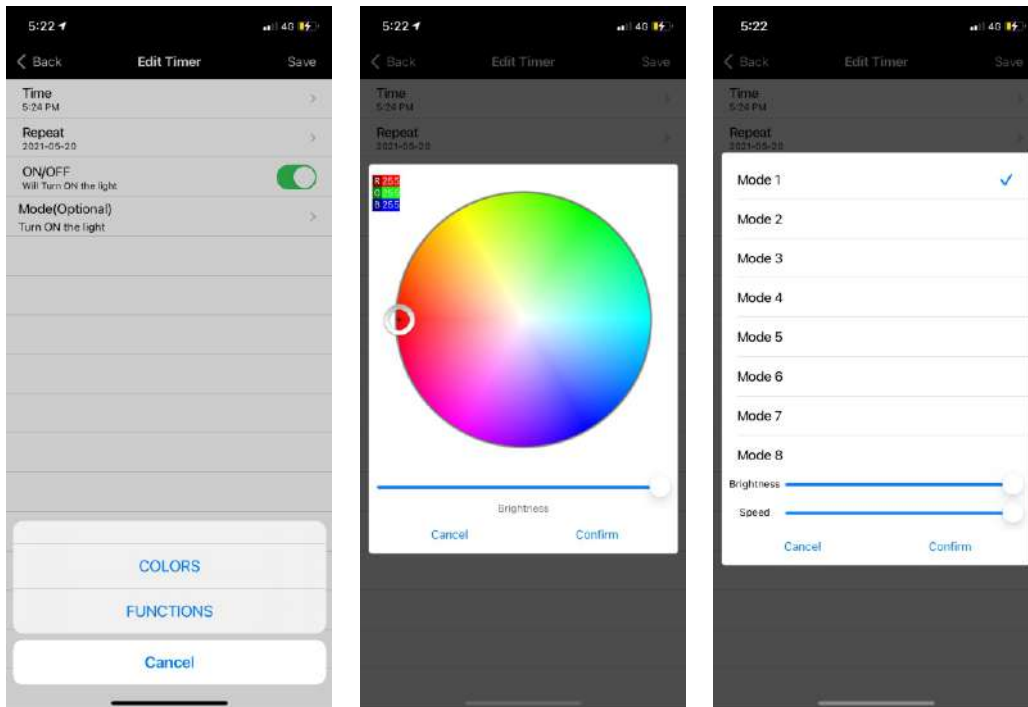


f) Timer function

Smart lights automatically come on and off at given times through the timer function.

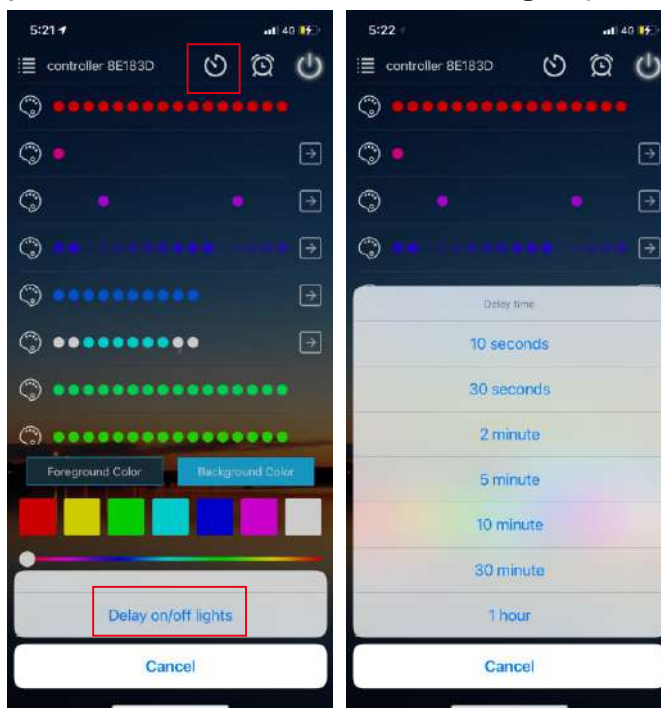


When setting the timer switch, you can select the color or dynamic mode and adjust the brightness and speed freely.



g) Delay on/off function:

The lighting delay on/off time can be set according to personal preference.



ATTENTIONS

1. Please use the product in a dry environment.
2. Please use the input voltage at 5-24V DC voltage, must not connect into 220V AC directly.
3. The product is requested common anode connection. The wrong connection will cause a malfunction.